



# COMPANY PROFILE



*Igniting Student Potential.  
Strengthening Institutions.  
Elevating Education.  
(#Imagine90)*



## OUR STORY

ElevatEd360 is a joint venture between **Edukat** and **DUX** designed to address the critical challenge of student success in South Africa's higher education sector and supporting their smooth transition into the economy.

By integrating years of expertise in student development, bursary management, institutional advisory, and education innovation, ElevatEd360 offers a **Shared Value Ecosystem** that aligns **students, institutions, funders, and policymakers** towards common goals.

Our mission is to ensure every student is equipped with the resources, skills, and support needed to succeed – while encouraging institutions to innovate, thrive, and contribute to nation building.

## CORE VALUES

### COLLABORATION



Building partnerships across sectors.

### INNOVATION



Leveraging technology and best practice.

### IMPACT



Measuring success through tangible outcomes.

### EQUITY



Ensuring access, opportunity and success for all students

### EXCELLENCE



Delivering the highest standard of support and advice.



# WHY NOW?

South Africa invests billions of rands in tertiary education each year, yet returns remain disproportionately low.

**Annually, only 15% of undergraduate students graduate nationally and nearly 25% drop out.**

Despite numerous initiatives, systemic issues – fragmented support, outdated practices, and disconnected strategies – continue to hinder student success. The result: billions spent with little transformation in skills, employability, or economic growth.

To close this gap, South Africa urgently needs an integrated, ecosystem-based model that unites funders, institutions, and student support systems to turn investment into measurable, sustainable outcomes.

# WHY US?

ElevatEd360 is that model – a smart, high-impact investment in South Africa's future workforce. It transforms traditional bursary and support programmes into a connected, data-driven ecosystem linking students, funders, institutions, and employers. Every rand invested translates directly into improved student success, employability, and measurable social and economic impact.

By partnering with ElevatEd360, investors gain transparent impact metrics, enhanced BBBEE outcomes, and the confidence that their investment drives real transformation – turning potential into performance.



ElevatEd360 is a

# LEVEL 2 BBEE ORGANISATION

## VISION STATEMENT

A flourishing education and youth development ecosystem where every student has the support, resources, and opportunities to succeed, and where institutions are empowered to accelerate innovation, drive excellence, and contribute to nation building.

## MISSION STATEMENT

To drive student success through world-class student support practices and thought leadership in a shared value ecosystem that fosters academic achievement, economic empowerment, and education reform in South Africa.

## THE NEED FOR AN INTEGRATED MODEL

- High student dropout, low graduation and throughput rates
- Misalignment between education outcomes and labour market needs
- Limited integration between institutional strategies and student support interventions
- Fragmented partnerships among funders, institutions, and policy bodies

ElevatEd360 addresses these challenges by creating one cohesive system that aligns stakeholders through structured support, shared objectives, and measurable impact.



# OUR SOLUTION

## THE SHARED VALUE ECOSYSTEM

**Our model is built on four key pillars:**

### STUDENT SUCCESS SUPPORT

- Comprehensive wraparound services: academic, psychosocial, financial, health, and employability
- Mentorship, coaching, and peer support networks
- Scalable technology-driven interventions to reach more students effectively

### INSTITUTIONAL CATALYSATION

- Advisory services to embed student-centred strategies in higher education
- Transformation and capacity-building programmes
- Research-driven recommendations for sustainable institutional change

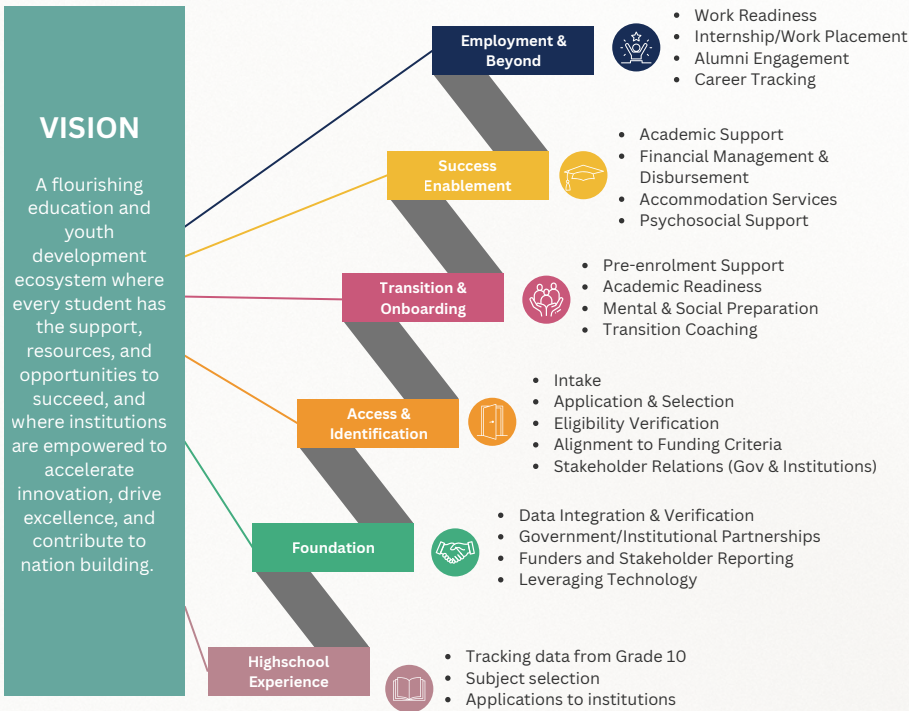
### THOUGHT LEADERSHIP & INNOVATION

- Leading national conversations on higher education reform
- Piloting and scaling successful student support models
- Engaging stakeholders through research, advocacy, and policy dialogues

### TECHNOLOGY & DATA-DRIVEN INSIGHTS

- Student tracking systems to monitor progress in real-time
- Institutional dashboards for decision-making and early intervention
- Data analytics for continuous improvement and impact measurement

# BUSINESS MODEL



# UNIQUE VALUE PROPOSITION



WHY ELEVATED360?

**Shared Value Ecosystem** – Serving as an aggregator and convenor between public and private stakeholders

**Proven Expertise** – Years of impactful work in higher education and bursary management

**Thought Leadership** – Influencing policy and shaping best practice frameworks

**Technology-Driven** – Using next generation technology and analytics to optimise student outcomes

**Holistic Approach** – Supporting both students and institutions for systemic change

OUR SERVICES

## 1. Wraparound Student Support & Bursary Administration

- Academic, accommodation, financial, psychosocial, wellness, and employability services
- Partnerships with corporates, government, and philanthropic funders

## 2. Institutional Advisory & Consulting

- Strategic transformation and programme design for higher education institutions
- Capacity-building and change management

## 3. Technology & Data Solutions

- Student success analytics
- Institutional dashboards and predictive modelling tools
- Research, data tracking, monitoring and evaluation and data analysis

## 4. Thought Leadership & Research

- Commissioned reports, white papers, and policy briefs
- Conferences, roundtables, and leadership training events

# CONTACT INFORMATION



## Location

Johannesburg, South Africa



## Email

[info@elevatEd360.co.za](mailto:info@elevatEd360.co.za)



## Website

[www.elevatEd360.co.za](http://www.elevatEd360.co.za)

